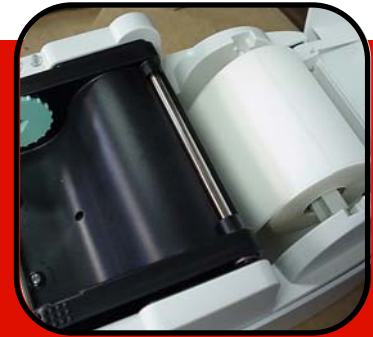


The Falcon 4D Plus



The Falcon 4D+ has lots of extra features packed into a compact, but powerful, desktop barcode printer that performs and is extremely simple to use.

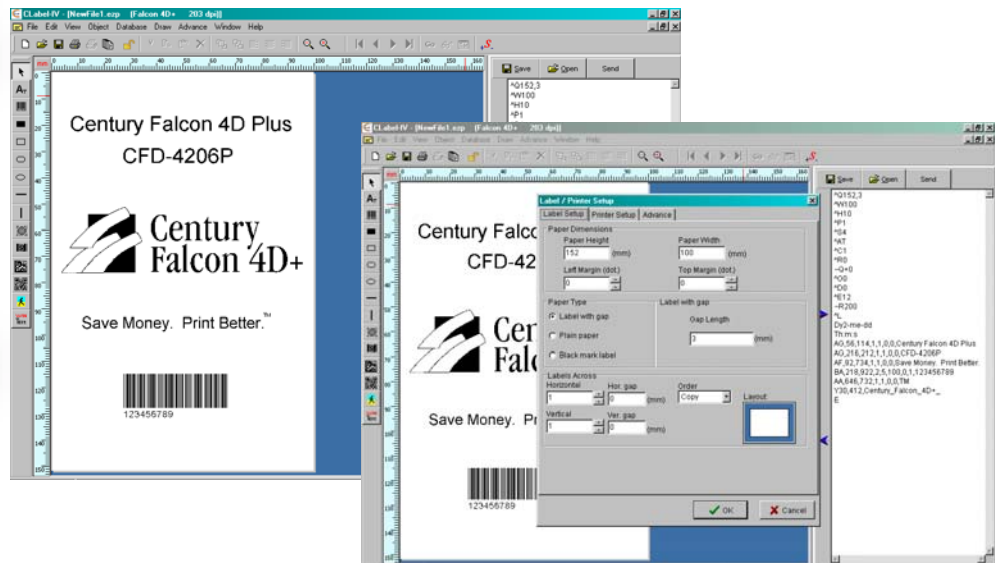
- Great Connectivity (serial, parallel, USB)
- Low Maintenance
- Small Footprint
- Easy To Load
- Uses a FULL size Ribbon Roll
- Easy To Use



 **Century Falcon 4D+**
Save Money. Print Better.™

Unlike most small printers, the Falcon 4D+ uses a FULL size ribbon roll. Large capacity allows for less downtime and increased productivity.

C-Label Professional Grade Label Software is Included



- Professional Grade
- Full Version Label Software
- Comparable to the pro versions of other leading label software packages

Professional results that are easy on the budget.

Century Falcon 4D+ Thermal Printer

Technical Specifications

Resolution	203dpi	300dpi
Print Mode	Thermal Transfer/Direct Thermal	
CPU	32 Bit	
Sensor Type	Adjustable Reflective sensor; Fixed transmissive, center aligned	
Sensor Detection	Type: Label gap, black mark and punch hole sensing Detection: Label length auto sensing and/or program command setting	
Print Speed	2" - 6" ips	2" - 4" ips
Print Length	Min. 12mm (.47"); Max. 1727mm (68")	Min. 12mm (.47"); Max. 762mm (30")
Print Width	108mm (4.25")	105.7mm (4.16")
Media	Label Roll: Max. 125mm (4.92"); Core Diameter: 1", 1.5", 3" Width: 25.0mm (1") - 118.0mm (4.65"); Thickness: 0.06 - 0.25mm (0.0025" - 0.0098")	
Ribbon	Length: Full Size; Type: transfer ribbons (wax, hybrid, resin) in widths of 30-110mm (1.88" to 4.33"); Core inner dia. 25.4mm (1"); Max. Ribbon roll OD: 68mm (2.67")	
Printer Language	EZPL ; Firmware downloadable	
Software	Application: C-Label IV included; DLL & Driver: Microsoft Windows NT4.0, 2000, XP and Vista	
Resident Fonts	11 resident Windows bit-mapped fonts, which are expandable 8 times horizontally, vertically. All fonts in 8 directions rotation. 6, 8, 10, 12, 14, 18, 24, 30, 16x26, OCR A&B Scalable Font in 4 orientations.	
Fonts Download	Windows bit-map fonts, True Type fonts & Asian fonts downloadable.	
Image Handling	BMP, PCX, Support ICO, WMF, JPG, EMF file through software. Image resize, rotating, mapping & inverse through software.	
Barcode	Code 39, Code 93, Code 128 (subset A,B,C), UCC/EAN-128 K-Mart, UCC/EAN-128, UPC A/E (add on 2 & 5), I 2 of 5, I 2 of 5 with shipping bearer bars, EAN 8/13 (add on 2 & 5), Codabar, Post NET, EAN 128, DUN 14, MaxiCode, HIBC, Plessey, random weight, Telepen, FIM, China Postal Code, RPS 128, PDF417, Datamatrix code, (QR code available)	
Interface	Serial RS-232, Parallel, USB v2.0	
Inter.Trans. Speed	RS232, Baud Rate 4800 - 115200, XON/XOFF, DSR/DTR	
Memory	SDRAM: 8MB; Flash: 4MB	
LED Display	LED *2, Bi-color; Function Key *1, FEED	
Power	Auto switching 100/240VAC, 50/60 Hz	
Environment	Operation: 41 to 104 degrees F (5 to 40 degrees C) Storage: -4 to 122 degrees F (-20 to 50 degrees C)	
Humidity	Operation: 30-85%, non-condensing Free air storage: 10-90%, non-condensing, free air	
Cert. Approval	CE, CUL, FCC Class A, CCC, CB, BSMI	
Printer Dimensions	Length: 285mm (11.2"); Height: 171mm (6.8") Width: 226mm (8.9"); Weight: 2.72kg (6 lbs)	
Options	Cutter, Label Peel and Strip, CF Card Adaptor with Real Time Clock, Internal Ethernet Adapter Card	

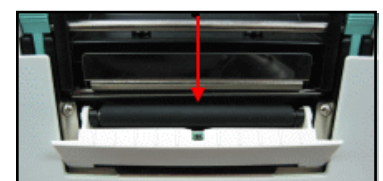
Specifications listed are for base model printers with standard features only. Specifications subject to change without notice. All products and brand names are trademarks of their respective companies. All rights reserved. ©2008 by Century Systems, Inc.



optional cutter module



moveable label gap sensor



optional label peel and strip