

**Downloading Labels, Fonts, and Graphics
On the Century Falcon 4 Printer
Using Q Label IV**

James E. Will

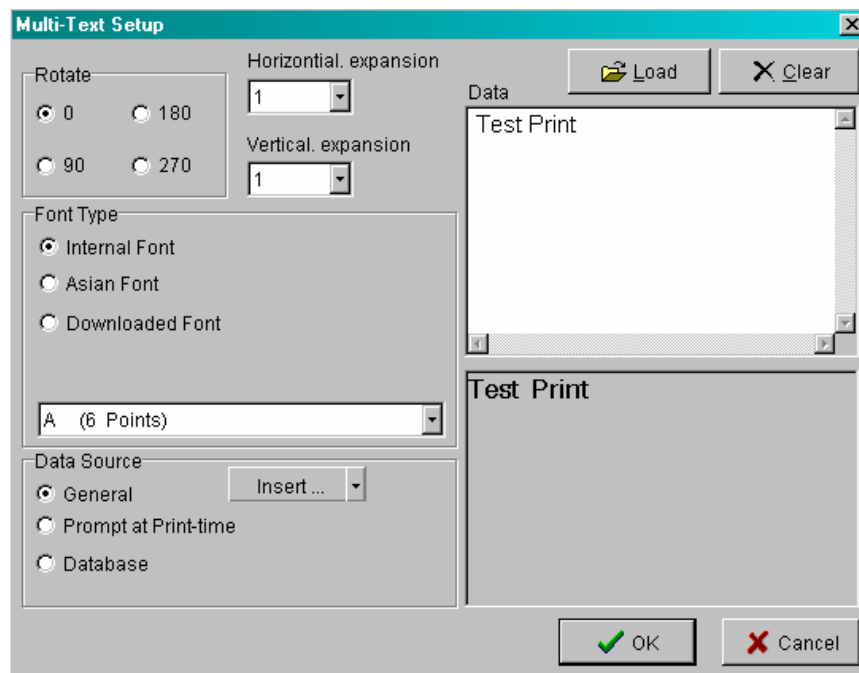
Copyright © 2006 Century Systems, Inc.

Downloading Labels, Fonts, and Graphics On the Century Falcon 4 Printer Using Q Label IV

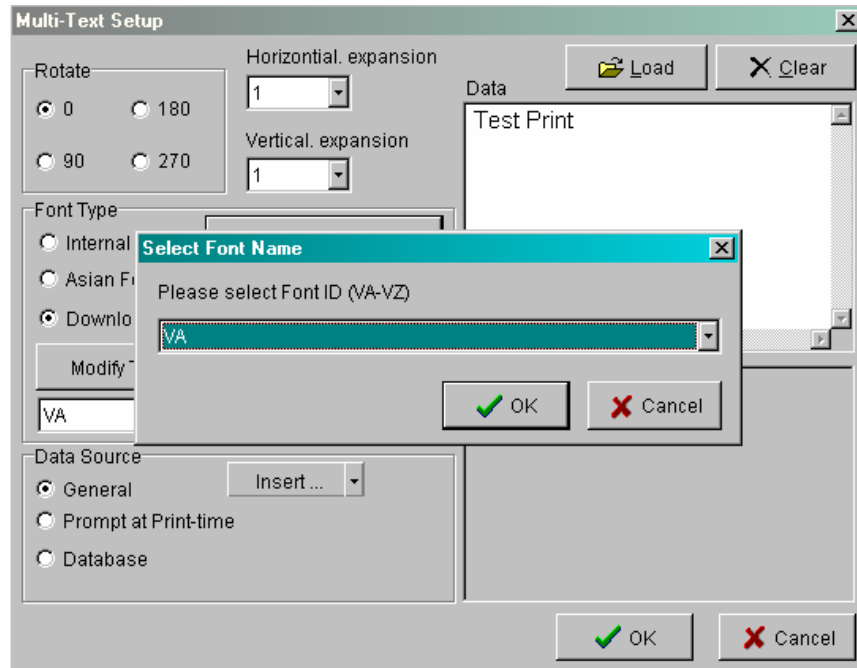
The basic procedure for downloading a label to the Falcon is fairly simple. However, if the label design contains any graphics or True Type fonts, those must be downloaded to the printer separately.

Downloading a True Type font is usually most easily done during the process of creating a new label. Make sure that your printer is turned on and that your parallel cable is attached. The steps for doing this follow:

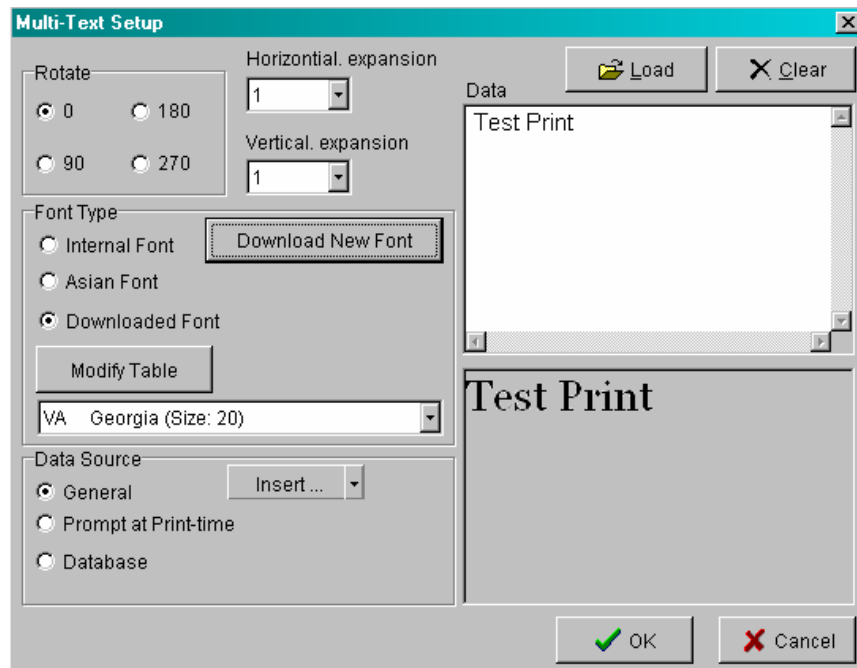
- a. Go to the Draw menu and click on 'Text'. [Or you can simply click on the Text icon.] Left click on a blank area of the label design. This will open the Multi-Text Setup window.
- b. Input a data string in the box that says 'Data'.



- e. In the Select Font Name window, choose the Font ID that you want to use for the chosen font. Click OK.



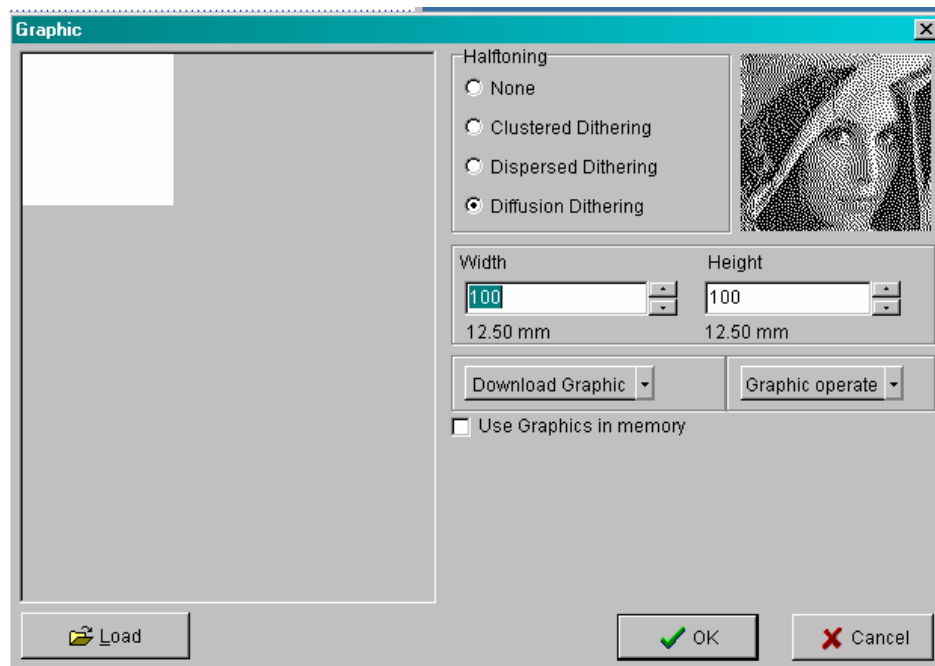
- f. The new font will be downloaded to the printer. You will see a progress bar appear on the computer. When it finishes, you should hear a single beep from the printer, indicating that the download has been received. The name of your new font will appear in the Multi-Text Setup box. Click OK.



- g. The data string will appear on the new label and will be ready to print.

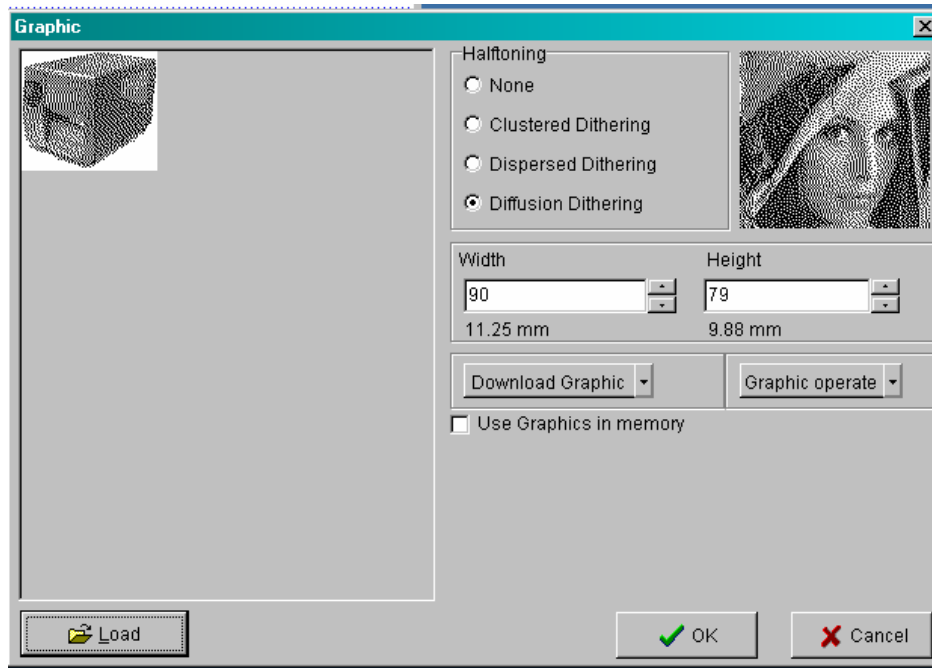
Downloading a graphic to the printer can also be done at the time a label is being created. It is accomplished in the following way:

- a. On the Draw menu, click on 'Graphic'. [Or use the Picture icon on the Q Label toolbar.] Left click on a blank area of the label design. This will open the Graphic dialog box.
- b. Click on the 'Load' button.

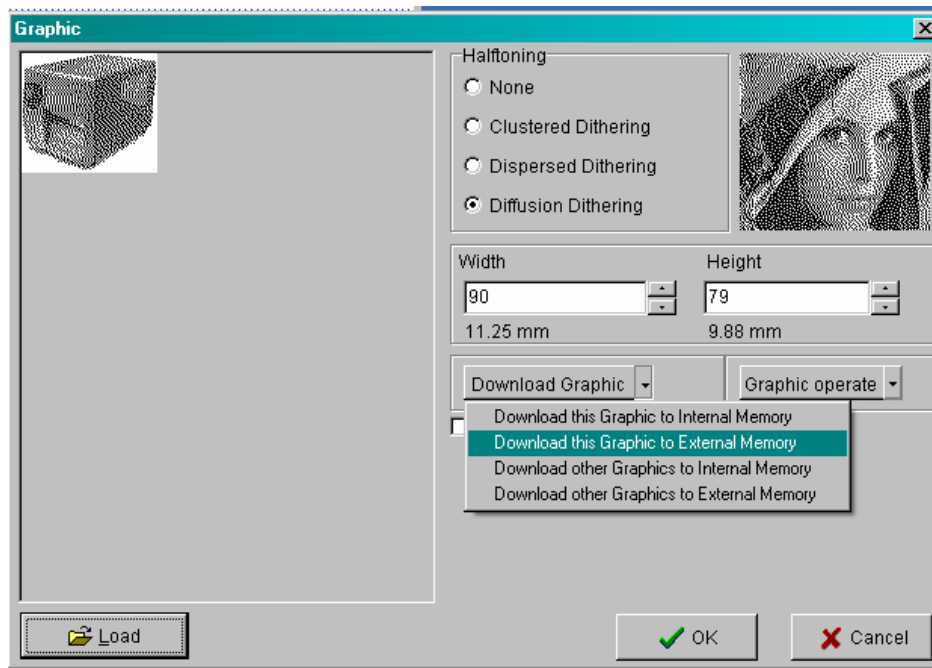


- c. Open the graphics file that you wish to add to the label. The chosen graphic will then appear in the Graphic dialog box.

See illustration on the following page.



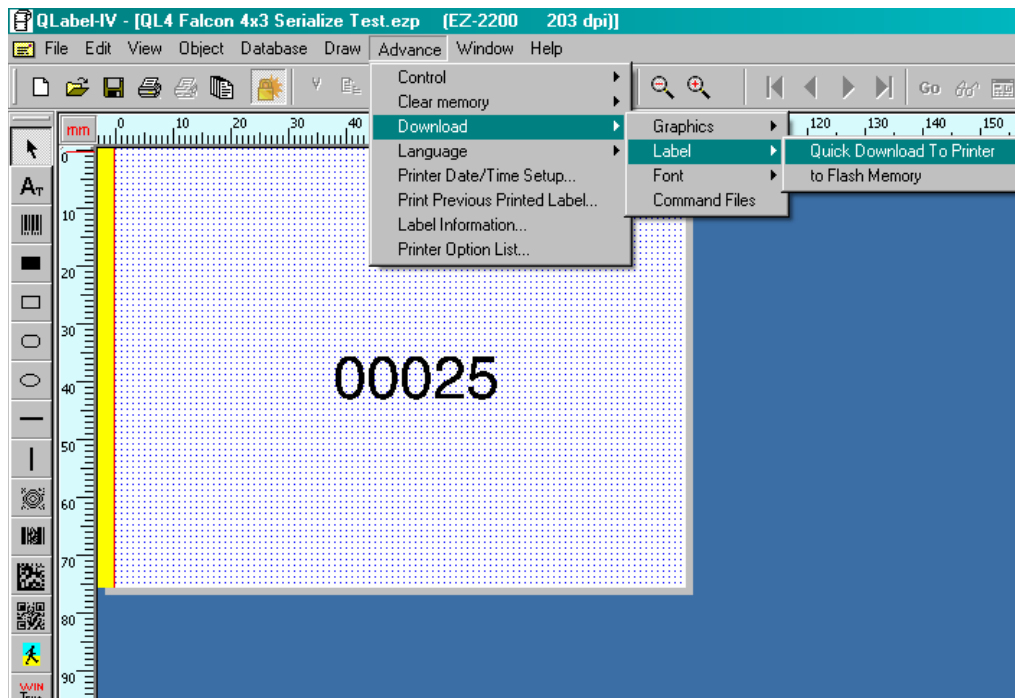
- d. Click on the dropdown arrow next to the 'Download Graphic' button and select 'Download this Graphic to External Memory'. Click OK.



- e. The software will ask you to provide a name for the graphic file. You can use either the default name (which should reflect whatever name you gave the graphic on your computer) or you can select a new name.
- f. When the download is completed, click OK to close the graphic box.

Once any True Type fonts and graphics have been downloaded to the printer, the label design itself can then be downloaded as well. The procedure is as follows:

- a. Go to the Advance menu. Highlight 'Download' in the submenu.
- b. In the next submenu, highlight 'Label' and then select 'Quick Download to Printer'.



- c. The software will ask you for a file name. You can use the default name (which will be the same as the file name in Q Label) or you can choose a new name.